



## F1 Series

Precision Screen Printer



Manual  
Installation :: Operation

## Set Up: Start Up Instructions

### 1. Main Air Supply.

\*Open valve slowly after attaching air.

### 2a. Regulator (Main Air):

Factory set at 80 PSI.

### 2b. Main air gauge.

### 3a. Regulator (Squeegee/Print head):

Factory Set at 30 PSI.

### 3b. Squeegee air gauge.

### 4. Regulator (Carriage Up-Down):

\*Used for the overhead cylinder on printer carriage.

Factory set. (Ref Page 2 item number 3 for carriage speed adjustment).  
Keep locked.

### 5. Air Filter:

Separates water from air.

Unscrew bottom plug to drain.

### 6. Air Lubricator:

Keeps pneumatic components lubricated

\*Be sure to use specific air tool oil. Fill plug located on top. Turn smaller cap to loosen.

\*Failure to use proper oil will result in damage to valve, hoses, and cylinder seals.

\*Maintain approximately  $\frac{3}{4}$  full.

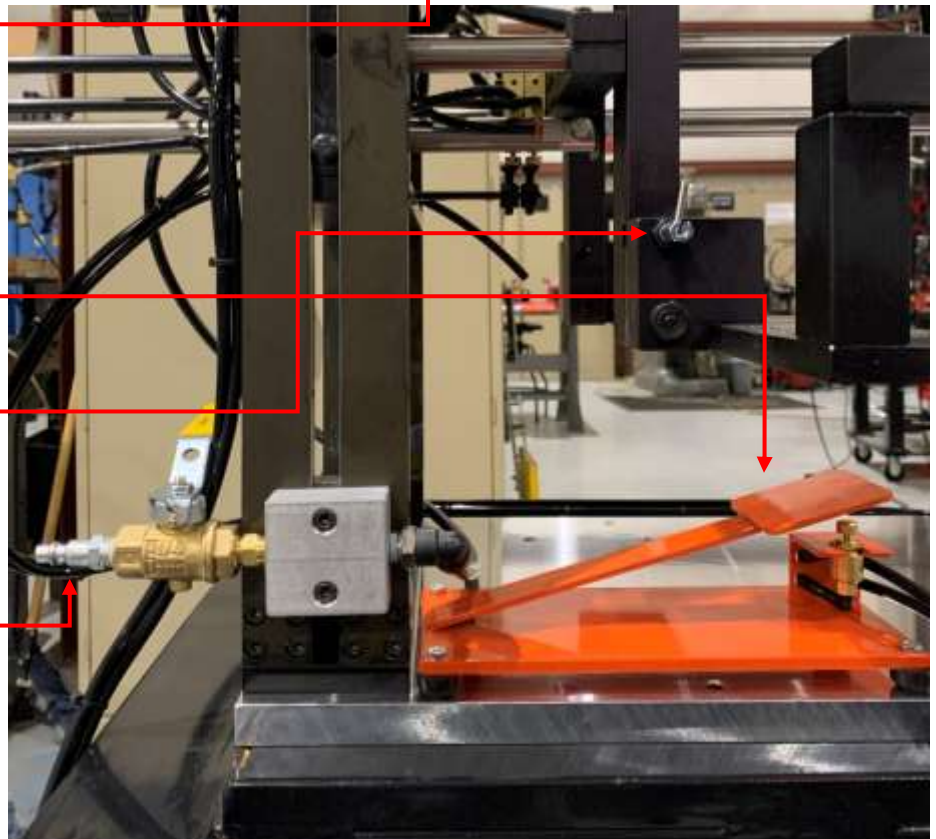
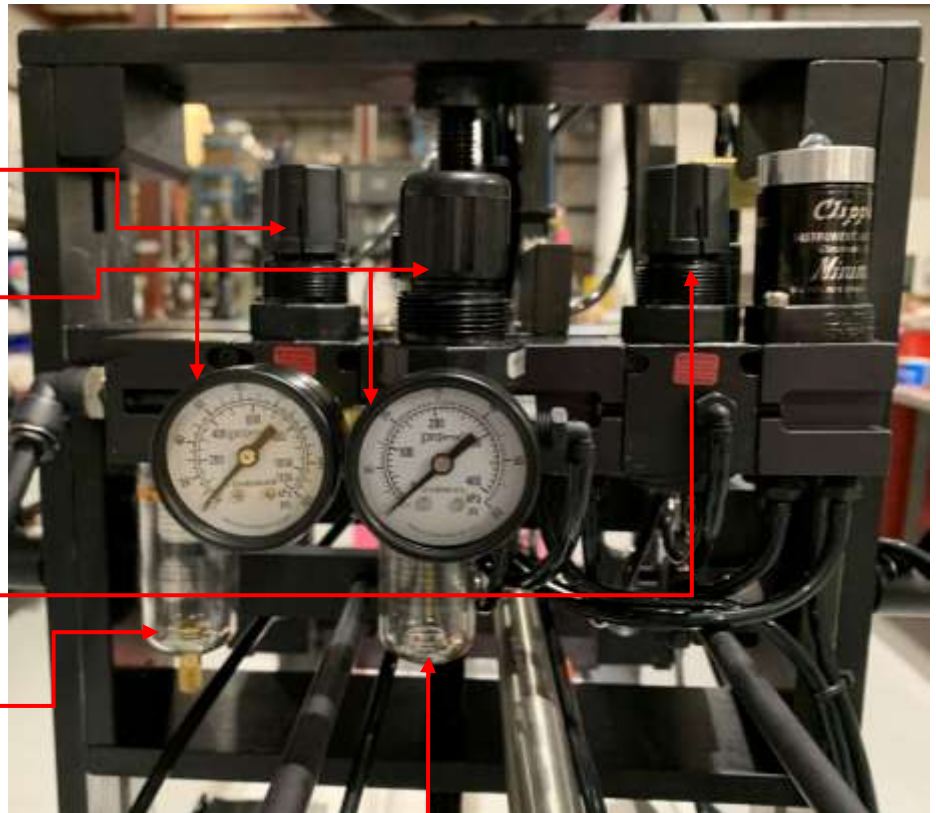
### 7. Foot Pedal:

Depress pedal once to perform one print cycle.

### 8. Locking Pin:

Pull L-pin out to drop screen for cleaning and maintenance.

\*Refer to page 4 item number 1 for screen adjustment instructions.



1a. Flood Bar.

1b. Flood Bar Up/Down Adjustment:

To adjust the down distance of the flood bar, turn knob located above flood bar cylinder.

\*Recommended distance between flood bar and screen is approximately .005".

\*Turn off main air source when making adjustments to the print head.

2a. Squeegee.

2b. Squeegee Up/Down Adjustment:

To adjust the down distance of the squeegee, turn knob located above the squeegee cylinder.

The red, yellow, and black lines are reference marks.

3. Carriage Lift Speed Flow Control:

Turn clockwise to decrease speed of the carriage lift.

Turn counterclockwise to increase speed.

4. Flood Speed Flow Control:

This flow control sets the speed of the flood stroke

\*Refer to item number 3 for adjustment instructions.

5. Print Speed Flow Control:

This flow control sets the desired speed of the print stroke.

\*Refer to item number 3 for adjustment instructions.

6. Shock Plate:

Sets to desired stroke length.

\*Shock absorber stiffness can be adjusted via flathead screwdriver.

\*Printhead should not crash into the plate at the end of the stroke.

7. Shock Absorber:

Adjust via shock plate so that absorber compresses at the same time as the Part #R0803001.

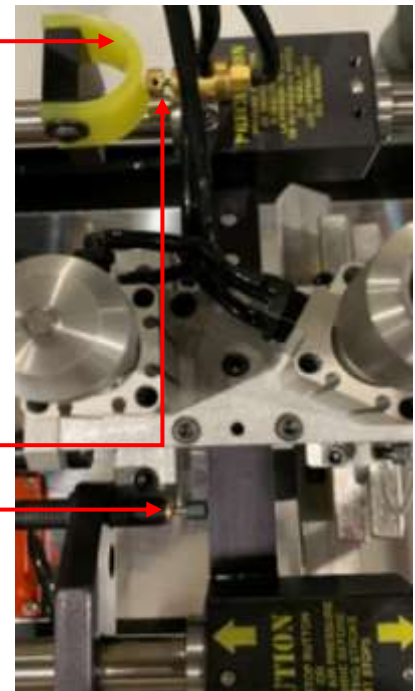
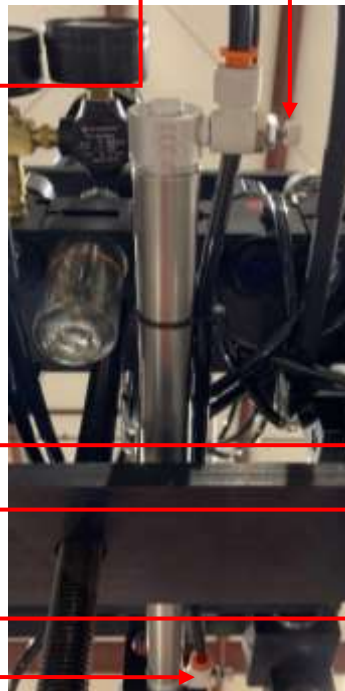
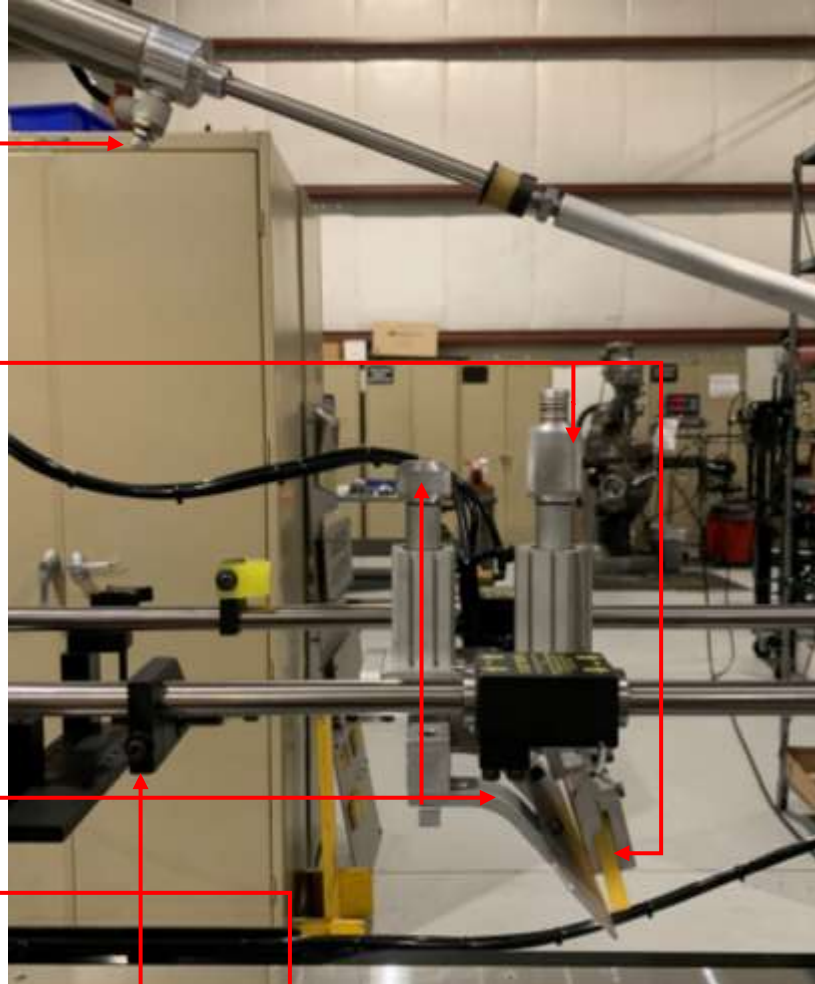
8. Part #R0803001:

Button should compress at the same time as the shock absorber.

\*See item number 6.

9. Squeegee Stop:

Adjustable in conjunction with back shock absorber to fit desired stroke length.



adjustments.

**2. Adjustable Locks:**

Loosen to make adjustments to carriage height using the press frame hand wheel in conjunction with front post rest.

**3. Press Frame Hand Wheel:**

Turn clockwise to raise and counterclockwise to lower the front carriage assembly.

**4. Front post rest:**

Maintain parallelism to printing surface when carriage is in the down position. Adjustable via front post rest hand wheel. \*Refer to page \_item \_\_ for rear screen frame holder instructions.

**5. Carriage Up/Down Toggle Switch:**

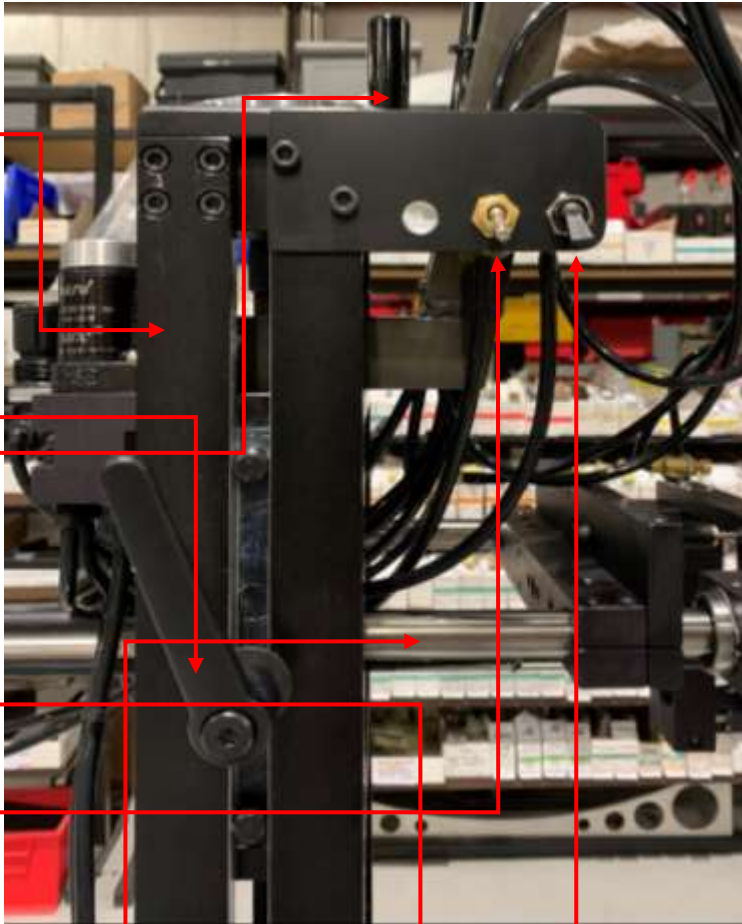
Lifts the carriage up and down. See page 2 item 3 for speed adjustment.

**6. Flood Hold Switch:**

Performs one flood stroke without

**7. Thompson shafts:**

Thompson shafts should be kept free of ink and debris for smooth and consistent operation.



1. Screen Frame Clamps:

Loosen and tighten the 4 screen frame clamps to secure screen.

2. Front screen frame holder:

Loosen front knobs and slide back to the front screen holder grip finger when cleaning or replacing screen.

